



TUDOR REALTY SERVICES CORP.

January 2012

## 301 Cathedral Parkway New York, New York

(located on 110<sup>th</sup> Street off Central Park West)

Tudor Realty Services Corp., as exclusive leasing agent, is pleased to offer the following retail space for lease:

**Space:** Part Ground Floor-  
Approx. 1,145 Square Feet

**Possession:** Available Immediately

**Lease Term:** Negotiable

**Rental Rate:** \$65.00 Per Square Foot

**Features:**

- Excellent exposure and high traffic location at base of 599 unit residential condominium.
- Located across the street from Central Park.
- Approximately 20' of frontage on 110<sup>th</sup> Street.
- Convenient to Transportation including B and C subway, which is located on corner.
- Many Uses Considered.
- No basement space



Building Photo



Storefront Photo

For additional information and to schedule an inspection, please contact:

Andrew S. Lazarus  
212 813 3054  
ALazarus@TudorRealty.com

No warranty or representation, express or implied, is made as to the accuracy of the information contained herein, and the same is submitted subject to errors, omissions, change of price, rental or other conditions, withdrawal without notice, and to any specific listing conditions imposed by TRS or principals. All measurements and dimensions are approximate.

Tudor Realty Services Corp. | A Full Service Residential and Commercial Real Estate Firm  
Licensed Real Estate Broker | 250 Park Avenue South | New York, New York 10003 | 212 557 3600

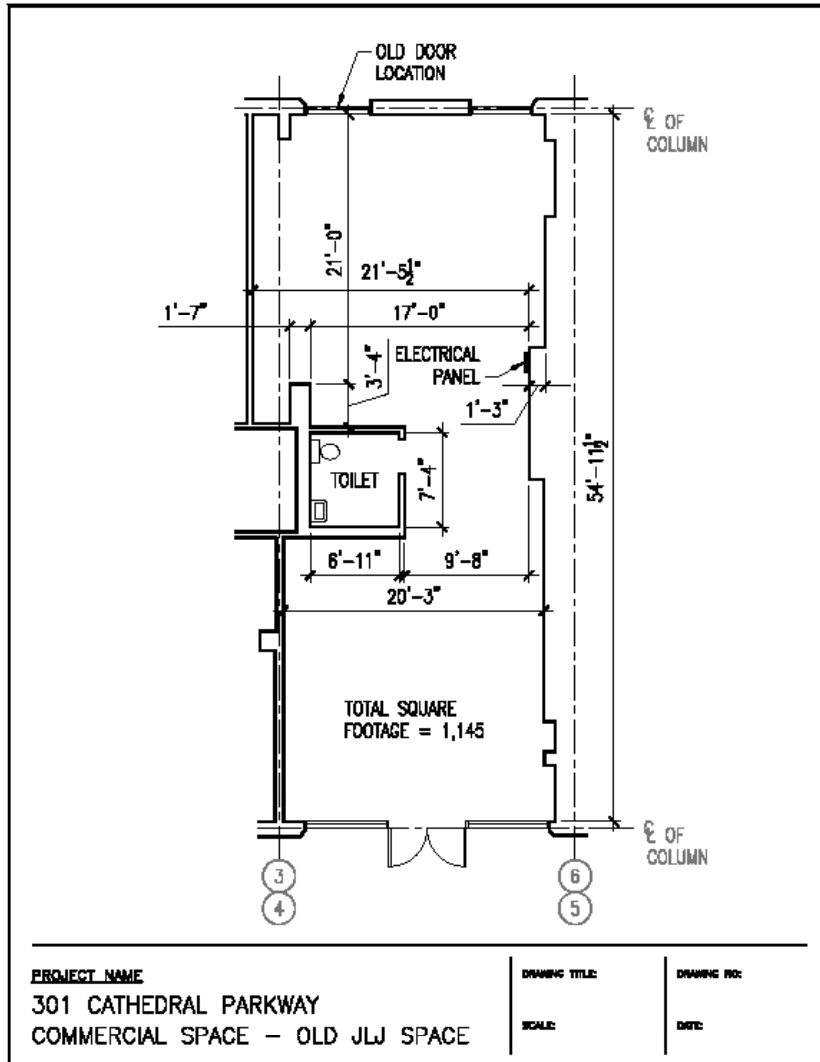


TUDOR REALTY SERVICES CORP.

# 301 Cathedral Parkway New York, New York

(located on 110<sup>th</sup> Street off Central Park West)

## Floor Plan



Not to scale. All measurements and dimensions are approximate. All measurements and conditions should be confirmed by field measurements.

For additional information and to schedule an inspection, please contact:

Andrew S. Lazarus  
212 813 3054  
ALazarus@TudorRealty.com

No warranty or representation, express or implied, is made as to the accuracy of the information contained herein, and the same is submitted subject to errors, omissions, change of price, rental or other conditions, withdrawal without notice, and to any specific listing conditions imposed by TRS or principals. All measurements and dimensions are approximate.

Tudor Realty Services Corp. | A Full Service Residential and Commercial Real Estate Firm  
Licensed Real Estate Broker | 250 Park Avenue South | New York, New York 10003 | 212 557 3600